

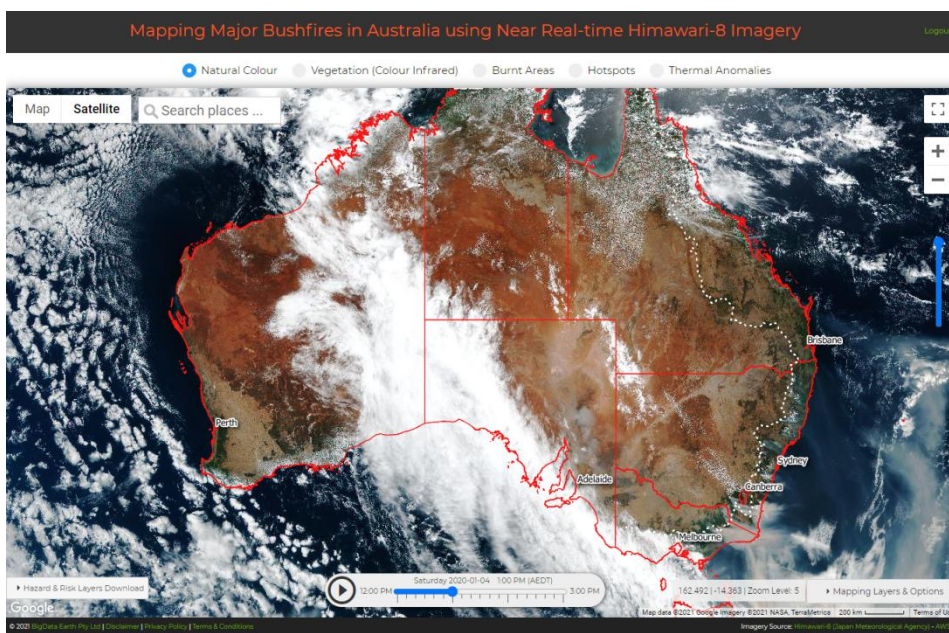
AUSTRALIA - Tiled Web Maps on Near Real-time Himawari-8 Imagery

Mapping Bushfire Risk in Australia: [Project Website](#)

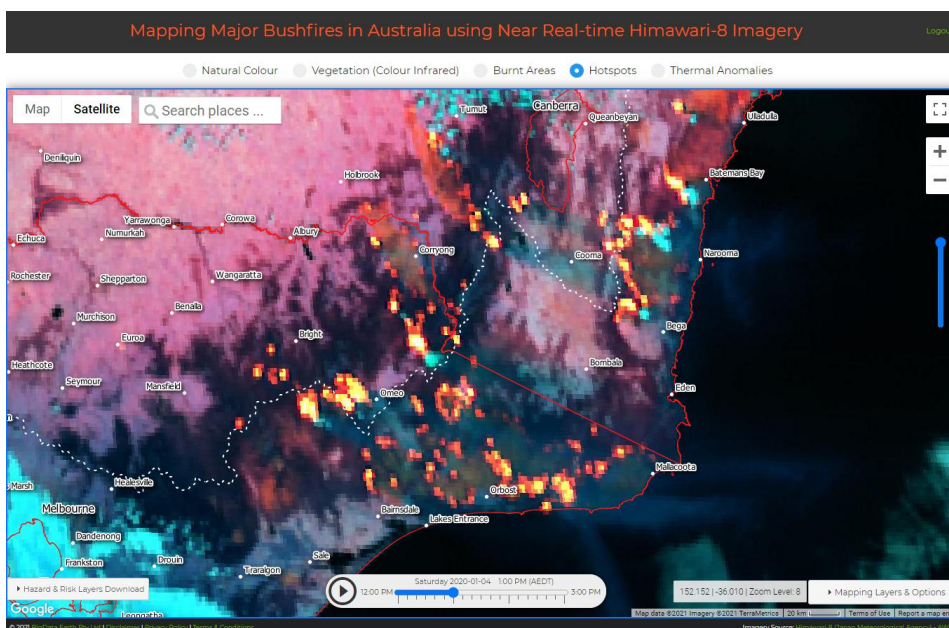
Accessible tiled web maps, based on near real-time Himawari-8 imagery available & processed every 10 minutes, include 5 image styles each highlighting a different aspect of bushfires:

- **Natural colour** – using visible bands and ideal for monitoring smoke from fires
- **Vegetation** – in colour infrared and healthy vegetation shown in red
- **Burnt areas** – using short-wave and infrared (SWIR) bands
- **Hotspots** – using mid-infrared & SWIR bands
- **Thermal anomalies** – using mid-infrared Band 07 alone

1. Overview: Near real-time tile maps displayed in a bushfire mapping app



Natural colour



Hotspots

2. Specifications

Tile Maps (XYZ Tiles)	Input Imagery Source	Output Tile Maps: A minimum set of zoom levels	Coverage
5 image styles	JMA Himawari-8	Web mapping zoom levels 5-6-7-8, corresponding to ~4.8-2.4-1.2-0.6 km spatial resolutions on the ground, respectively.	Australia Nationwide

3. Access URL Format, e.g.

```
curl https://api.RiskMapping.com.au/h8/{year}/{month}/{day}/{hhmm}/{tileset}/{z}/{x}/{y}.[jpg | png] -H apikey=[x]
```

or, with a single URL address:

```
https://api.RiskMapping.com.au/h8/{year}/{month}/{day}/{hhmm}/{tileset}/{z}/{x}/{y}.[jpg | png]?&apikey=[x]
```

4. Subscription Plans

Level 2	Level 3	Level Xi
Visit < 2,000,000 map tiles per month	Visit < 4,000,000 map tiles per month	Further discussion

All plans access to the same set of tile maps.

- All tile maps are live and rapidly distributed by AWS content delivery networks (CDN). Data is stored in AWS Sydney Data Centre. Access in Australia and related performance is among the best.
- For evaluation, subscription and pricing, please contact us at info@BigDataEarth.com